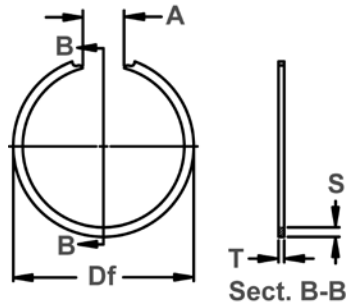




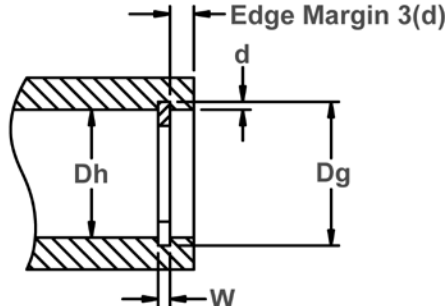
# HBL/HBM/HBH

## 同心型止め輪

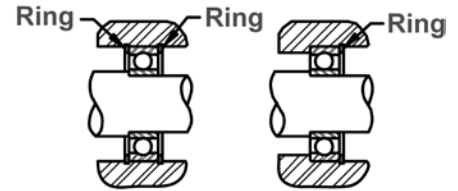
穴用 同心型止め輪 (メートル)  
 軸受 (SAE規格品: メートル) 用  
 穴に加工した溝に嵌め込み  
 溝からはみ出ている部分が受けとして働き  
 部品を固定。



自由径 & 止め輪寸法  
 切断面 B-B



穴径 & 溝寸法



止め輪を使い、左右二方向から  
 軸受を固定する図 (左図) と一  
 方向から固定する図 (右図)

原材料: SAE 1060-1075

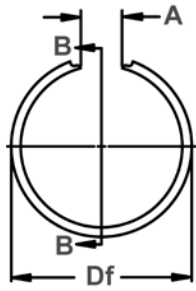
| 止め輪<br>番号 | 軸受番号 |     |     | 穴径        |          | 溝寸法   |       |      |       |      | 止め輪寸法 |       |         | 最小<br>自由外径<br>における<br>間隙径 |       |                        |
|-----------|------|-----|-----|-----------|----------|-------|-------|------|-------|------|-------|-------|---------|---------------------------|-------|------------------------|
|           |      |     |     |           |          | 溝径    |       | 溝巾   |       | 深さ   | 自由径   |       | 板厚      |                           | 板幅    |                        |
|           | 軽    | 中   | 重   | Dh<br>DEC | Dh<br>mm | Dg    | 公差    | W    | 公差    | d    | Df    | 公差    | T ±.002 |                           | S     | 公差                     |
| HBL-30    | 200  |     |     | 1.1811    | 29.93    | 1.243 |       | .035 |       | .031 | 1.265 |       | .031    | .100                      | ±.003 | .375<br>+.080<br>-.000 |
| HBM-30    |      |     |     | 1.1811    | 29.93    | 1.253 |       | .046 |       | .036 | 1.265 |       | .042    | .125                      | ±.005 |                        |
| HBH-30    |      |     |     | 1.1811    | 29.93    | 1.251 |       | .068 |       | .035 | 1.271 |       | .062    | .109                      | ±.003 |                        |
| HBL-32    | 201  |     |     | 1.2598    | 31.93    | 1.321 |       | .035 |       | .031 | 1.349 | +.031 | .031    | .100                      |       |                        |
| HBM-32    |      |     |     | 1.2598    | 31.93    | 1.331 |       | .046 |       | .036 | 1.343 | -.000 | .042    | .125                      | ±.005 |                        |
| HBH-32    |      |     |     | 1.2598    | 31.93    | 1.329 |       | .068 |       | .035 | 1.365 |       | .062    | .109                      | ±.003 |                        |
| HBL-35    | 202  |     |     | 1.3780    | 34.92    | 1.440 |       | .035 |       | .031 | 1.468 |       | .031    | .100                      |       |                        |
| HBM-35    |      | 300 |     | 1.3780    | 34.92    | 1.450 |       | .046 |       | .036 | 1.468 |       | .042    | .125                      | ±.005 |                        |
| HBH-35    |      |     |     | 1.3780    | 34.92    | 1.458 |       | .068 |       | .040 | 1.486 |       | .062    | .140                      |       |                        |
| HBL-37    |      |     |     | 1.4567    | 36.92    | 1.518 | ±.005 | .035 |       | .031 | 1.546 |       | .031    | .100                      | ±.003 |                        |
| HBM-37    |      | 301 |     | 1.4567    | 36.92    | 1.528 |       | .046 |       | .036 | 1.546 |       | .042    | .125                      |       |                        |
| HBH-37    |      |     |     | 1.4567    | 36.92    | 1.536 |       | .068 |       | .040 | 1.564 |       | .062    | .140                      |       |                        |
| HBL-40    | 203  |     |     | 1.5748    | 39.91    | 1.654 |       | .046 |       | .040 | 1.687 |       | .042    | .125                      |       |                        |
| HBM-40    |      |     |     | 1.5748    | 39.91    | 1.668 |       | .046 |       | .047 | 1.703 |       | .042    | .156                      |       |                        |
| HBH-40    |      |     |     | 1.5748    | 39.91    | 1.668 |       | .068 |       | .047 | 1.703 |       | .062    | .156                      |       |                        |
| HBL-42    |      |     |     | 1.6535    | 41.90    | 1.733 |       | .046 |       | .040 | 1.765 |       | .042    | .125                      |       |                        |
| HBM-42    |      | 302 |     | 1.6535    | 41.90    | 1.747 |       | .046 |       | .047 | 1.781 | +.046 | .042    | .156                      |       |                        |
| HBH-42    |      |     |     | 1.6535    | 41.90    | 1.747 |       | .062 |       | .047 | 1.781 | -.000 | .062    | .156                      |       |                        |
| HBL-47    | 204  |     |     | 1.8504    | 46.89    | 1.930 |       | .046 |       | .040 | 1.968 |       | .042    | .125                      |       |                        |
| HBM-47    |      | 303 |     | 1.8504    | 46.89    | 1.944 |       | .046 |       | .047 | 1.968 |       | .042    | .156                      |       |                        |
| HBH-47    |      |     |     | 1.8504    | 46.89    | 1.951 |       | .068 |       | .050 | 1.976 |       | .062    | .172                      |       |                        |
| HBL-52    | 205  |     |     | 2.0472    | 51.88    | 2.137 |       | .046 | +.004 | .045 | 2.171 |       | .042    | .156                      |       |                        |
| HBM-52    |      | 304 |     | 2.0472    | 51.88    | 2.141 |       | .046 | -.000 | .047 | 2.171 |       | .042    | .156                      |       |                        |
| HBH-52    |      |     |     | 2.0472    | 51.88    | 2.148 |       | .068 |       | .050 | 2.179 |       | .062    | .172                      |       |                        |
| HBL-62    | 206  |     |     | 2.4409    | 61.86    | 2.530 |       | .068 |       | .045 | 2.562 |       | .062    | .156                      | ±.005 |                        |
| HBM-62    |      | 305 |     | 2.4409    | 61.86    | 2.544 |       | .068 |       | .052 | 2.562 |       | .062    | .156                      |       |                        |
| HBH-62    |      |     | 403 | 2.4409    | 61.86    | 2.565 |       | .103 |       | .062 | 2.593 |       | .093    | .187                      |       |                        |
| HBL-72    | 207  |     |     | 2.8346    | 71.83    | 2.934 |       | .068 | ±.006 | .050 | 2.968 |       | .062    | .156                      |       |                        |
| HBM-72    |      | 306 |     | 2.8346    | 71.83    | 2.959 |       | .068 |       | .062 | 2.984 |       | .062    | .187                      |       |                        |
| HBH-72    |      |     | 404 | 2.8346    | 71.83    | 2.959 |       | .103 |       | .062 | 3.000 |       | .093    | .187                      |       |                        |
| HBL-80    | 208  |     |     | 3.1496    | 79.82    | 3.249 |       | .068 |       | .050 | 3.281 | +.062 | .062    | .156                      |       |                        |
| HBM-80    |      | 307 |     | 3.1496    | 79.82    | 3.274 |       | .068 |       | .062 | 3.296 | -.000 | .062    | .187                      |       |                        |
| HBH-80    |      |     | 405 | 3.1496    | 79.82    | 3.274 |       | .103 |       | .062 | 3.312 |       | .093    | .218                      |       |                        |
| HBL-85    | 209  |     |     | 3.3465    | 84.81    | 3.446 |       | .068 |       | .050 | 3.484 |       | .062    | .156                      |       |                        |
| HBM-85    |      |     |     | 3.3465    | 84.81    | 3.471 |       | .068 |       | .062 | 3.500 |       | .062    | .187                      |       |                        |
| HBH-85    |      |     |     | 3.3465    | 84.81    | 3.471 |       | .103 |       | .062 | 3.500 |       | .093    | .218                      |       |                        |

単位: mm

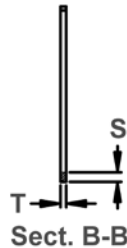
硬さ: 全サイズ: HRC 42 ~ 52

その他の先端部形状をご希望の場合は、japan@rotorclip.comまでお問い合わせ下さい。

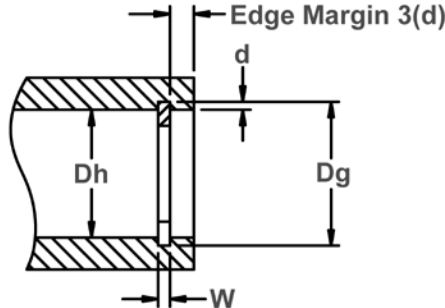




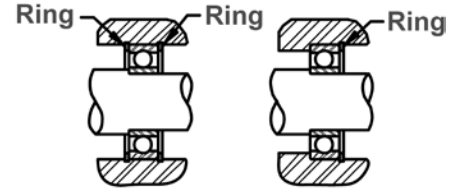
自由径 & 止め輪寸法  
切断面 B-B



Sect. B-B



穴径 & 溝寸法



止め輪を使い、左右二方向から軸受を固定する図（左図）と一方向から固定する図（右図）

原材料: SAE 1060-1075

| 止め輪番号   | 軸受番号 |     |     | 穴径     |        | 溝寸法   |       |      |       |      | 止め輪寸法 |       |         | 最小自由外径における間隙径 |       |
|---------|------|-----|-----|--------|--------|-------|-------|------|-------|------|-------|-------|---------|---------------|-------|
|         |      |     |     |        |        | 溝径    |       | 溝巾   |       | 深さ   | 自由径   |       | 板厚      |               | 板幅    |
|         | 軽    | 中   | 重   | Dh DEC | Dh mm  | Dg    | 公差    | W    | 公差    | d    | Df    | 公差    | T ±.002 |               | S     |
| HBL-90  | 210  |     |     | 3.5433 | 89.79  | 3.643 |       | .103 |       | .050 | 3.687 |       | .093    | .156          |       |
| HBM-90  |      | 308 |     | 3.5433 | 89.79  | 3.668 |       | .103 |       | .062 | 3.703 |       | .093    | .187          |       |
| HBH-90  |      |     | 406 | 3.5433 | 89.79  | 3.713 |       | .139 |       | .085 | 3.750 |       | .125    | .250          |       |
| HBL-100 | 211  |     |     | 3.9370 | 100.00 | 4.062 |       | .103 |       | .062 | 4.093 |       | .093    | .187          |       |
| HBM-100 |      | 309 |     | 3.9370 | 100.00 | 4.107 |       | .103 |       | .085 | 4.140 |       | .093    | .250          |       |
| HBH-100 |      |     | 407 | 3.9370 | 100.00 | 4.107 |       | .139 |       | .085 | 4.140 |       | .125    | .250          |       |
| HBL-110 | 212  |     |     | 4.3307 | 110.00 | 4.455 | ±.006 | .103 |       | .062 | 4.500 | +.093 | .093    | .187          |       |
| HBM-110 |      | 310 |     | 4.3307 | 110.00 | 4.500 |       | .103 |       | .085 | 4.531 | -.000 | .093    | .250          |       |
| HBH-110 |      |     | 408 | 4.3307 | 110.00 | 4.500 |       | .139 |       | .085 | 4.531 |       | .125    | .250          |       |
| HBL-120 | 213  |     |     | 4.7244 | 120.00 | 4.884 |       | .120 |       | .080 | 4.937 |       | .109    | .250          |       |
| HBM-120 |      | 311 |     | 4.7244 | 120.00 | 4.912 |       | .120 |       | .094 | 4.953 |       | .109    | .281          |       |
| HBH-120 |      |     | 409 | 4.7244 | 120.00 | 4.894 |       | .139 |       | .085 | 4.937 |       | .125    | .250          |       |
| HBL-125 | 214  |     |     | 4.9213 | 125.00 | 5.081 |       | .120 |       | .080 | 5.125 |       | .109    | .250          |       |
| HBM-125 |      |     |     | 4.9213 | 125.00 | 5.109 |       | .120 |       | .094 | 5.156 |       | .109    | .281          |       |
| HBH-125 |      |     |     | 4.9213 | 125.00 | 5.121 |       | .174 | +.004 | .100 | 5.151 |       | .156    | .312          | ±.005 |
| HBL-130 | 215  |     |     | 5.1181 | 130.00 | 5.278 |       | .120 | -.000 | .080 | 5.312 |       | .109    | .250          |       |
| HBM-130 |      | 312 |     | 5.1181 | 130.00 | 5.306 |       | .120 |       | .094 | 5.343 |       | .109    | .281          |       |
| HBH-130 |      |     | 410 | 5.1181 | 130.00 | 5.318 |       | .174 |       | .100 | 5.355 |       | .156    | .312          |       |
| HBL-140 | 216  |     |     | 5.5118 | 140.00 | 5.671 |       | .120 |       | .080 | 5.703 |       | .109    | .250          |       |
| HBM-140 |      | 313 |     | 5.5118 | 140.00 | 5.699 |       | .120 |       | .094 | 5.750 | +.125 | .109    | .281          |       |
| HBH-140 |      |     | 411 | 5.5118 | 140.00 | 5.711 | ±.007 | .174 |       | .100 | 5.750 | -.000 | .156    | .312          |       |
| HBL-150 | 217  |     |     | 5.9055 | 150.00 | 6.065 |       | .120 |       | .080 | 6.093 |       | .109    | .250          |       |
| HBM-150 |      | 314 |     | 5.9055 | 150.00 | 6.093 |       | .120 |       | .094 | 6.125 |       | .109    | .281          |       |
| HBH-150 |      |     | 412 | 5.9055 | 150.00 | 6.105 |       | .174 |       | .100 | 6.156 |       | .156    | .312          |       |
| HBL-160 | 218  |     |     | 6.2992 | 160.00 | 6.459 |       | .120 |       | .080 | 6.500 |       | .109    | .250          |       |
| HBM-160 |      | 315 |     | 6.2992 | 160.00 | 6.497 |       | .120 |       | .094 | 6.550 |       | .109    | .281          |       |
| HBH-160 |      |     | 413 | 6.2992 | 160.00 | 6.500 |       | .174 |       | .100 | 6.550 |       | .156    | .312          |       |
| HBL-170 | 219  |     |     | 6.6929 | 170.00 | 6.892 |       | .139 |       | .100 | 6.937 |       | .125    | .312          |       |
| HBM-170 |      | 316 |     | 6.6929 | 170.00 | 6.942 |       | .139 |       | .125 | 6.982 |       | .125    | .375          |       |
| HBH-170 |      |     |     | 6.6929 | 170.00 | 6.892 |       | .174 |       | .100 | 6.937 |       | .156    | .312          |       |
| HBL-180 | 220  |     |     | 7.0866 | 180.00 | 7.286 |       | .139 |       | .100 | 7.343 |       | .125    | .312          |       |
| HBM-180 |      | 317 |     | 7.0866 | 180.00 | 7.336 |       | .139 |       | .125 | 7.380 | +.187 | .125    | .375          |       |
| HBH-180 |      |     | 414 | 7.0866 | 180.00 | 7.336 | ±.008 | .209 |       | .125 | 7.381 | -.000 | .187    | .375          |       |
| HBL-190 | 221  |     |     | 7.4803 | 190.00 | 7.680 |       | .139 |       | .100 | 7.718 |       | .125    | .312          |       |
| HBM-190 |      | 318 |     | 7.4803 | 190.00 | 7.730 |       | .139 |       | .125 | 7.781 |       | .125    | .375          |       |
| HBH-190 |      |     |     | 7.4803 | 190.00 | 7.730 |       | .209 |       | .125 | 7.782 |       | .187    | .375          |       |
| HBL-200 | 222  |     |     | 7.8740 | 200.00 | 8.074 |       | .139 |       | .100 | 8.125 |       | .125    | .312          |       |
| HBM-200 |      | 319 |     | 7.8740 | 200.00 | 8.125 |       | .139 |       | .125 | 8.187 |       | .125    | .375          |       |
| HBH-200 |      |     | 416 | 7.8740 | 200.00 | 8.125 |       | .209 |       | .125 | 8.187 |       | .187    | .375          |       |

単位: mm

硬さ: 全サイズ: HRC 42 ~ 52

その他の先端部形状をご希望の場合は、japan@rotorclip.comまでお問い合わせ下さい。

