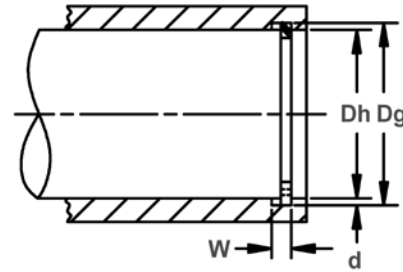
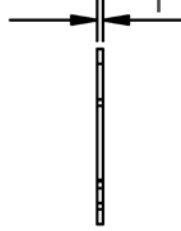
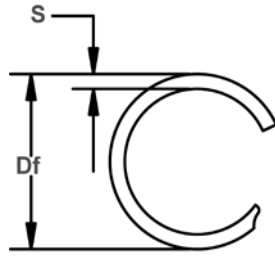




KL 穴用スパイラルリング

穴用 軽荷重用
 単巻スパイラルリングで、
 軽荷重用アプリケーションに最適。



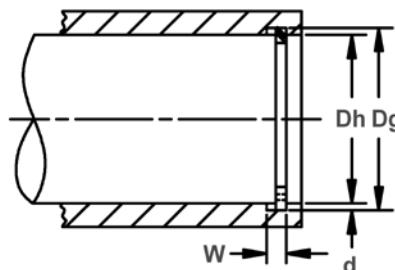
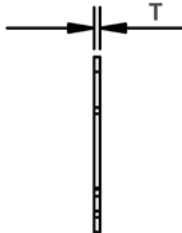
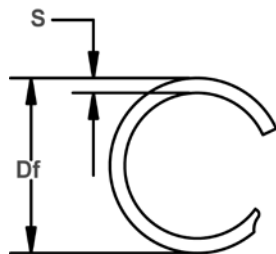
自由径 & 止め輪寸法

穴径 & 溝寸法

止め輪 番号	穴径		溝寸法				自由径		止め輪寸法		板幅		荷重 (lbs.)	
	(In.)		溝径		溝巾		深さ		板厚		板幅		止め輪 安全率 (=3)	溝 安全率 (=2)
	Dh	Dg	公差	W	公差	d	Df	公差	T	公差	S	公差		
KL-50	.500	.528		.022		.014	.531		.018		.045		1300	500
KL-56	.562	.590	+ .002	.022		.014	.593		.018		.045		1460	560
KL-62	.625	.653	- .002	.022		.014	.656		.018		.045		1630	620
KL-68	.687	.715		.022		.014	.719	+ .013	.018		.045		1790	680
KL-75	.750	.779		.022		.015	.783	- .000	.018		.045		1950	800
KL-81	.812	.854		.026		.021	.862		.021		.065		2460	1210
KL-87	.875	.917	+ .003	.026	+ .002	.021	.926		.021	+ .0015	.065		2660	1300
KL-93	.937	.979	- .003	.026	- .000	.021	.989		.021	- .0015	.065		2840	1390
KL-100	1.000	1.042		.026		.021	1.052		.021		.065		3040	1480
KL-106	1.062	1.106		.031		.022	1.117		.025		.088		3500	1650
KL-112	1.125	1.169		.031		.022	1.180		.025		.088		3710	1750
KL-118	1.187	1.231		.031		.022	1.242		.025		.088		3920	1850
KL-125	1.250	1.294	+ .004	.031		.022	1.307	+ .015	.025		.088		4120	1940
KL-131	1.312	1.356	- .004	.031		.022	1.369	- .000	.025		.088		4330	2040
KL-137	1.375	1.419		.031		.022	1.433		.025		.088		4540	2140
KL-143	1.437	1.481		.031		.022	1.496		.025		.088		4740	2240
KL-150	1.500	1.544		.031		.022	1.559		.025		.088		4950	2330
KL-156	1.562	1.619		.039		.029	1.637		.031		.118	+ .004	6390	3200
KL-162	1.625	1.682		.039		.029	1.701		.031		.118	- .004	6650	3330
KL-168	1.687	1.744		.039		.029	1.763		.031		.118		6900	3460
KL-175	1.750	1.807	+ .005	.039		.029	1.827	+ .020	.031		.118		7160	3590
KL-181	1.812	1.869	- .005	.039		.029	1.890	- .000	.031		.118		7410	3710
KL-187	1.875	1.932		.039		.029	1.953		.031		.118		7670	3840
KL-193	1.937	1.994		.039		.029	2.016		.031		.118		7920	3970
KL-200	2.000	2.057		.039		.029	2.079		.031		.118		8180	4100
KL-206	2.062	2.138		.039		.038	2.162		.031		.158		8430	5540
KL-212	2.125	2.201		.039	+ .003	.038	2.226		.031	+ .002	.158		8690	5710
KL-218	2.187	2.263		.039	- .000	.038	2.289		.031	- .002	.158		8950	5870
KL-225	2.250	2.326		.039		.038	2.352		.031		.158		9200	6040
KL-231	2.312	2.388		.039		.038	2.415		.031		.158		9460	6210
KL-237	2.375	2.451		.039		.038	2.478		.031		.158		9720	6380
KL-243	2.437	2.513	+ .006	.039		.038	2.541	+ .025	.031		.158		9970	6550
KL-250	2.500	2.576	- .006	.039		.038	2.605	- .000	.031		.158		10230	6720
KL-256	2.562	2.638		.039		.038	2.667		.031		.158		10480	6880
KL-262	2.625	2.701		.039		.038	2.731		.031		.158		10740	7050
KL-268	2.687	2.763		.039		.038	2.794		.031		.158		10990	7220
KL-275	2.750	2.826		.039		.038	2.857		.031		.158		11250	7390
KL-281	2.812	2.888		.039		.038	2.920		.031		.158		11500	7550
KL-287	2.875	2.951		.039		.038	2.983		.031		.158		11760	7720
KL-293	2.937	3.013		.039		.038	3.046		.031		.158		12010	7890
KL-300	3.000	3.076		.039		.038	3.110		.031		.158		12270	8060

単位: inch





自由径 & 止め輪寸法

穴径 & 溝寸法

止め輪 番号	穴径		溝寸法				止め輪寸法				荷重 (lbs.)			
			溝径		溝巾		自由径		板厚		板幅		止め輪 安全率 (=3)	溝 安全率 (=2)
	(In.) Dh	Dg	公差	W	公差	d	Df	公差	T	公差	S	公差		
KL-306	3.062	3.154		.044		.046	3.188		.039		.188		15760	9960
KL-312	3.125	3.217		.044		.046	3.251		.039		.188		16080	10160
KL-318	3.187	3.279		.044		.046	3.314		.039		.188		16400	10360
KL-325	3.250	3.342		.044		.046	3.377		.039		.188		16720	10570
KL-331	3.312	3.404		.044		.046	3.440		.039		.188		17040	10770
KL-337	3.375	3.467		.044		.046	3.504		.039		.188		17370	10970
KL-343	3.437	3.529		.044		.046	3.566		.039		.188		17690	11180
KL-350	3.500	3.592		.044	+ .003	.046	3.630	+ .030	.039		.188		18010	11380
KL-356	3.562	3.654		.044	- .000	.046	3.692	- .000	.039		.188		18330	11580
KL-362	3.625	3.717	+ .006	.044		.046	3.756		.039		.188		18650	11790
KL-368	3.687	3.779	- .006	.044		.046	3.819		.039		.188		18970	11990
KL-375	3.750	3.842		.044		.046	3.882		.039		.188		19300	12190
KL-381	3.812	3.904		.044		.046	3.945		.039		.188		19620	12400
KL-387	3.875	3.967		.044		.046	4.009		.039		.188		19940	12600
KL-393	3.937	4.029		.044		.046	4.071		.039		.188		20260	12800
KL-400	4.000	4.092		.044		.046	4.135		.039		.188		20580	13010
KL-412	4.125	4.235		.052		.055	4.279		.046		.225	+ .005	23850	16040
KL-425	4.250	4.360		.052		.055	4.405		.046		.225	- .005	24570	16520
KL-437	4.375	4.485		.052		.055	4.531		.046		.225		25290	17010
KL-450	4.500	4.610		.052		.055	4.658	+ .035	.046		.225		26010	17500
KL-462	4.625	4.735		.052		.055	4.784	- .000	.046		.225		26740	17980
KL-475	4.750	4.860		.052		.055	4.910		.046	+ .002	.225		27460	18470
KL-487	4.875	4.985		.052		.055	5.036		.046	- .002	.225		28180	18950
KL-500	5.000	5.110		.052		.055	5.163		.046		.225		28900	19440
KL-525	5.250	5.381		.067		.066	5.435		.061		.225		40240	24490
KL-550	5.500	5.638	+ .007	.067	+ .004	.069	5.694		.061		.225		42160	26830
KL-575	5.750	5.894	- .007	.067	- .000	.072	5.953		.061		.225		44080	29260
KL-600	6.000	6.150		.067		.075	6.212	+ .045	.061		.265		45990	31810
KL-625	6.250	6.406		.067		.078	6.470	- .000	.061		.265		47910	34460
KL-650	6.500	6.663		.067		.082	6.730		.061		.265		49830	37680
KL-675	6.750	6.919		.067		.085	6.988		.061		.265		51740	40560
KL-700	7.000	7.175		.067		.088	7.247		.061		.265		53660	43540
KL-725	7.250	7.431		.067		.091	7.505		.061		.265		55580	46640
KL-750	7.500	7.688		.067		.094	7.765		.061		.265		57490	49830
KL-775	7.750	7.944	+ .008	.067		.097	8.023	+ .060	.061		.300		59410	53140
KL-800	8.000	8.200	- .008	.067		.100	8.282	- .000	.061		.300		61320	56500
KL-825	8.250	8.456		.067		.103	8.541		.061		.300		63240	60000
KL-850	8.500	8.713		.067		.107	8.800		.061		.300		65160	64290
KL-875	8.750	8.969		.082		.110	9.059		.076		.345	+ .004	83570	68040
KL-900	9.000	9.225		.082		.113	9.317		.076		.345	- .008	85950	71890
KL-925	9.250	9.481		.082	+ .005	.116	9.576	+ .070	.076		.345		88340	75850
KL-950	9.500	9.738		.082	- .000	.119	9.835	- .000	.076		.345		90730	79910
KL-975	9.750	9.994		.082		.122	10.094		.076		.345		93120	84080
KL-1000	10.000	10.250		.082		.125	10.353		.076		.345		95500	88360

単位: inch

